

Industrial references

6990 & 3120-series chains

*Detailing lines, car & people movers, external car wash,
inspection conveyors, skid conveyors*



Reference List



- Airport Düsseldorf, Carwash installation (interior & exterior)
- Apple Valley Carwash, Apple Valley (CA), Exterior wash
- Audi Brussels, carwash application
- BLG Autologistik, Kielheim, Germany, cleaning conveyor
- BLG Autologistik, Kielheim, Germany, inspection conveyor
- Bob Autowas, Schiedam, Netherlands, Detailing
- Bob Autowas, Schiedam, Netherlands, Polishing conveyor
- Carisma, Houston (TX), USA, exterior wash conveyor
- Car Lovers, Graz, Austria, Detailing
- Christ Wash Systems, Memmingen, Germany, Exterior wash
- Classic Car Spa, Crofton (MD) USA, Exterior wash
- Classic Car Spa, Meza (AR), USA, Exterior wash
- Clean Town, Allison Park (PA), USA, Detailing
- Cloister Car Wash, Ephrata (PA), USA, Detailing
- Daimler Sindelfingen, Carwash application
- Delta Sonic, Buffalo (NY), USA, Detailing
- Delta Sonic, Rockchester (NY), USA, Detailing
- ICO / Mazda, Zeebrugge, Belgium, Madza terminal, Inspection conveyor
- Janzen Autowasch, Cloppenburg, Germany, Exterior wash
- Mr. Wash, Düsseldorf, Essen, Dortmund and Stuttgart, all in Germany, Detailing
- Meyer Werft, Germany, cabin assembly line
- Mr. Wash, Dortmund and Stuttgart, Germany Exterior wash
- Renault Tanger, Maroc, Skid handling application
- Scrub-A-Dub, Dorchester (MA), USA, Detailing
- Splish Splash Car Wash, St. Louis (GO), USA, Exterior wash
- STV, Brisbane, Australia, Exterior wash
- Touchless, Washington (DC), United States, exterior wash
- Van Nuys Carwash, Van Nuys (CA) Exterior wash
- Volkswagen Taubaté, Brasil, Skid Handling application
- Volkswagen Hannover, carwash application
- Volkswagen Pune, India, Final Inspection conveyor.
- Volkswagen Navarra, Spain, Skid Handling application
- Volkswagen Navarra, Spain, Final Inspection conveyor

Note: This list is not complete. Several applications have been installed of which we do not have specific installation details

6990-series



REXNORD
PRECISION. POWER. PERFORMANCE.

Application Report Detailing



- **Cloisters Oil & Lube, Ephrata & Reading (PA), USA**
 - BRSM5995 detailing installations since 1999:
 - 15 mtr detailing conveyor with 3658mm wide chain (99)
 - 15 mtr detailing conveyor with 610 mm wide chain , 3 lanes next to and in between existing over-under chain (99)
 - 36,6 mtr detailing conveyors, 3658mm chain (03)
 - 30% capacity improvement over original over-under set-up
 - Still original, virtually maintenance free
 - Conveyed over 1,300,000 vehicles!



Application Report Detailing



- **Mr. Wash, Germany**
 - BRSM5995 / BRSM6995 detailing conveyors:
 - 36,6 mtr long production conveyors with 4,6 mtr loader conveyors. Chains are 3658mm wide.
 - Main sites have 4 lanes side by side.
 - Capacity 60 cars per line per hour.
 - Sites in Dortmund, Essen, Düsseldorf and Stuttgart.
 - First site operational since 2003, latest site since 2009.
 - All sites are still operating the original chains



Application Report Detailing



- **Delta Sonic, USA**
 - BYSM5995 detailing conveyors:
 - 30 mtr long production conveyors
 - Four sites have been converted from original installed chain to Rexnord MatTop chain. Main reason is wear and drive issues with original chains.
 - Choice for Rexnord based on seven year track record at Cloisters (in 2006)
 - Sites in Crestwood II, Syracuse NY and two in Buffalo NY
 - First site operational since 2006



Bob Carwash, Schiedam, Netherlands

- BYSM6999-178 detailing application.
 - Dual 40 mtr long production conveyors with 5 mtr loader conveyors.
 - Equipped with BYSM6999-178 chains (4521 mm wide)
 - Positioned on 1st floor of the washing centre.
 - Start-up December 2007
- New applications planned on Curacao (start up March 2011).



- **Car Lovers, Graz, Austria**
 - BRSM6999 Internal detailing conveyor with loader:
 - 5 mtr [16ft] loader
 - 34 mtr [115ft] production conveyor
 - BRSM6999-K156
 - Application started April 2008
 - Second application started for summer 2010 (Klagenfurt, Austria).



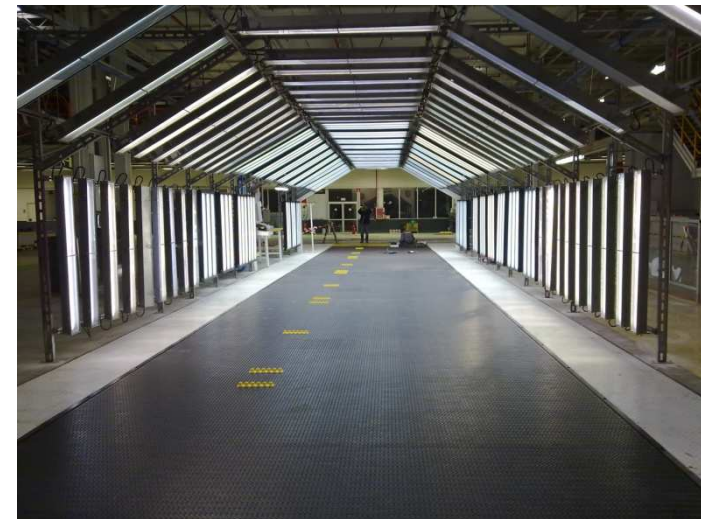
- **Volkswagen (VWI), Pune, India**
 - BYSM6999-K156 Inspection line:
 - 24 mtr people mover conveyor
 - 3962mm wide
 - Standard plastic pins
 - Speed up to 5 m/min
 - In final inspection area
 - Final inspection conveyor
 - Conveying vehicles and workers
 - Installation date: December 2010



Automobile News



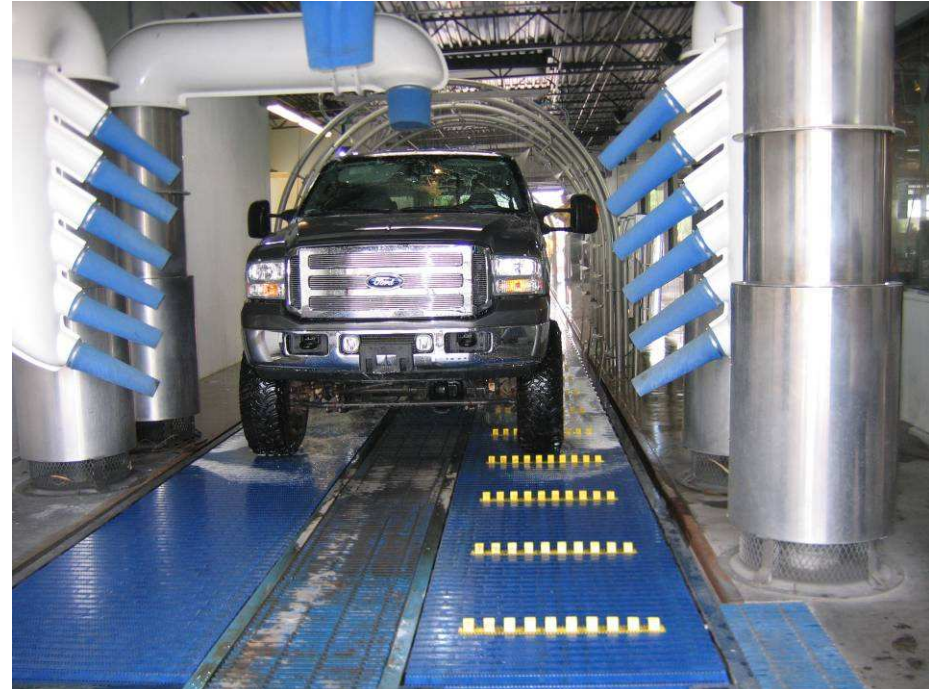
- **Volkswagen Pamplona (Navarra) Spain**
 - HCAS6999-K156 Inspection line:
 - 45 mtr conveyor
 - HCAS Anti-Static material
 - Standard plastic pins
 - 3962mm wide
 - Speed up to 5 m/min
 - In final inspection area
 - Conveying vehicles and workers
 - Equipped with T1 automotive pushers for vehicle positioning
 - With perforated area for fumes discharge
 - Installation date: December 2010



- **Mr. Wash, Dortmund Germany**
 - BSM5995 dual lane exterior wash:
 - 45 mtr dual lane exterior wash concept with 915 mm wide chains with moulded T1 (25mm) BSM automotive pushers
 - Capacity to wash 150 cars per hour
 - First tunnel start-up date December 2007
 - Second tunnel started mid 2008 (using 6995)
 - 4 Detailing conveyors started September 2008 (using BRSM 6995 – K144)



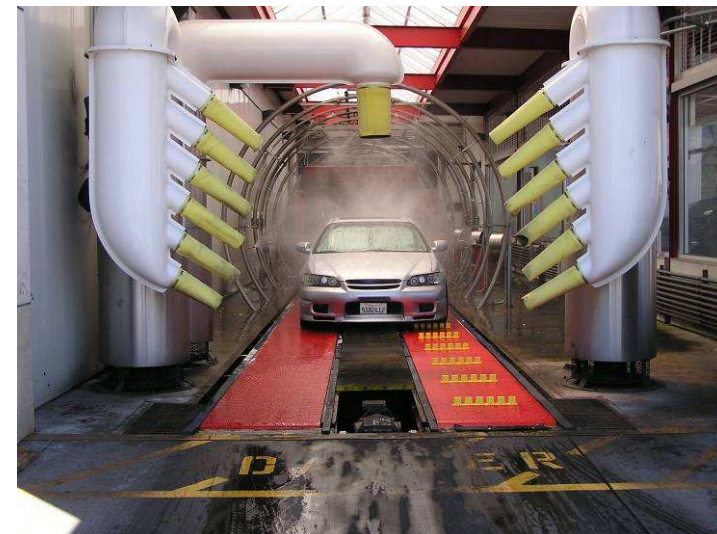
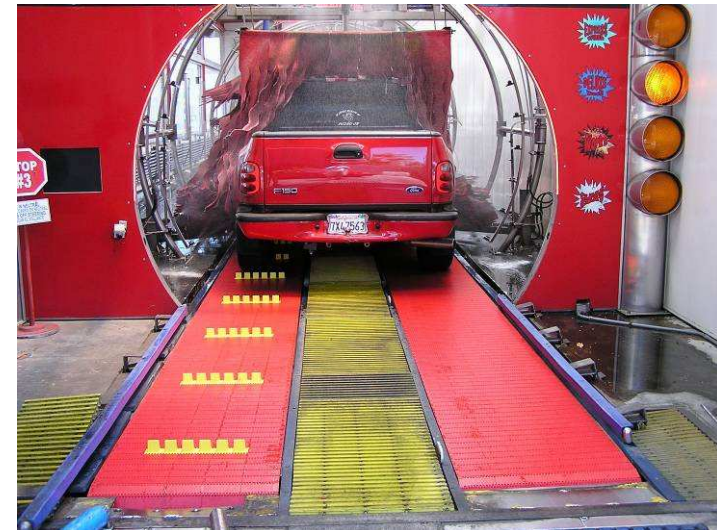
- **Classic Car Spa,
Meza AZ and
Crofton MD, USA**
 - **SMYB5995 dual lane
exterior wash:**
 - 30 mtr dual lane
exterior wash concept
with 1066 mm wide
chains with molded T2
(50,8 mm) YSM
automotive pushers
 - Capacity of 100 cars
per hour
 - In operation since
2005



Application Report External



- **VanNuys Express Carwash, VanNuijs CA, USA**
 - RSM6995 dual lane exterior wash since 2007:
 - 25 mtr dual lane exterior wash concept with 762mm wide chains with moulded T2 YSM automotive pushers
 - 6995 series chain with moulded pushers replaced perforated Rexnord chain with standard bolt-on pushers
 - Capacity of 80 cars per hour
 - Smooth operation since the start



Splish Splash Carwash, St. Louis MO

- SMYB5995 dual lane exterior wash:
 - 25 mtr dual lane exterior wash concept with 762mm wide chains with moulded T2 YSM automotive pushers
- Washing 150 cars per day
- In operation since may 2006
- Capacity of 80 cars per hour

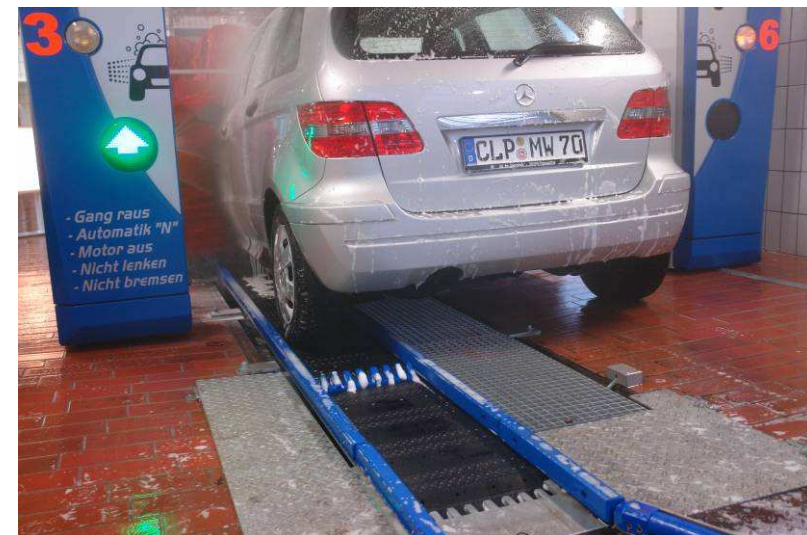


STV, Brisbane, Australia

- SMYB6995-30 dual lane exterior wash:
 - 25 mtr dual lane exterior wash concept with 30" wide chains
- In operation since January 2008
- Capacity of 80 cars per hour



- **Janzen Autowasch,
Cloppenburg, Germany**
 - BSM6995/99 single lane exterior wash:
 - 24 mtr single lane exterior wash concept with 406 mm wide chains with machined pushers
 - Capacity to wash 80 cars per hour
 - Tunnel start-up date December 2007
 - The OEM installed a similar application at Volkswagen in Hannover.

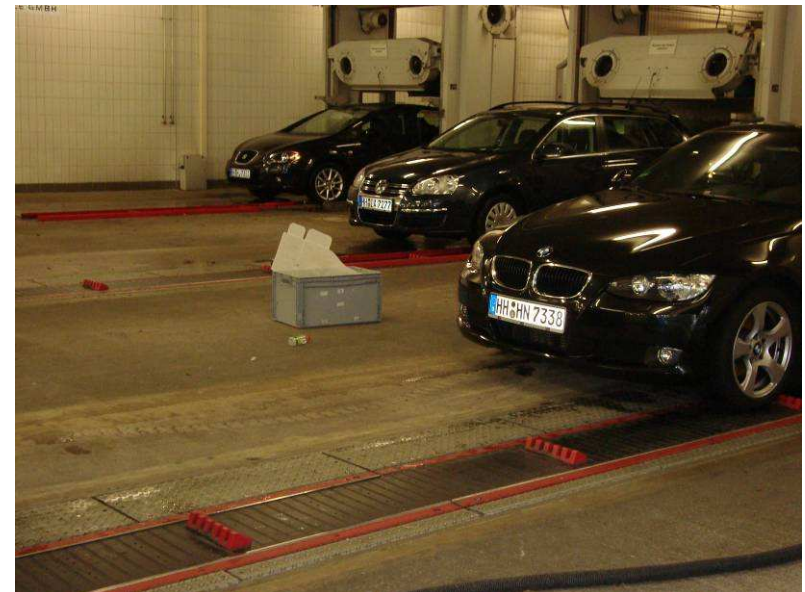


Application Report Car Wash



Düsseldorf Airport, Car Park 6, Germany

- BSM6995-K16 with pushers
 - Return area of Rental cars
 - 30 mtr long partly wet & partly dry running single lane 16-inch (406 mm) wide conveyors.
 - 3 similar installations
 - External and internal cleaning of all rentals at this airport location
 - Average 2500 vehicles per day
 - Start-up September 2009



3120-series



Volkswagen Navarra, Pamplona, Spain

– BSM3125-K4

- 12 mtr long dry running dual lane 4-inch (101mm) wide SKID conveyor.
- in conveying area painting department
- Replacing Reinforced Rubber Belt due to drive and timing issues
- Located in Navarra Spain
- Equipped with BSM3125-4 chains in wear resistant plain acetal with plastic pins
- Running in MCC3000 profiles
- Start-up July 2009, 2nd phase executed end of 2009, 3rd executed end of 2010.



Renault Tanger Méditerranée, Maroc

– HCAS3125-K4

- Various (K4 - 101mm) wide SKID conveyors up to 15 mtr long dry running dual lane 4-inch.
- Longitudinal and cross conveyor applications in Paint Shop area
- Newly installed project in 2010 by Dürr Paint and Assembly systems.
- Located in Tanger, Maroc
- Equipped with HCAS3125-4 chains in wear resistant Anti-Static acetal (10^{11} - 10^{13}) with plastic pins



Volkswagen Taubaté, São Paulo, Brasil

– BSM3125-K4 SKID chain

- Three (3) 8 mtr long dry running dual lane 4-inch (101mm) wide longitudinal SKID conveyors.
- in conveying area painting department
- Replacing Reinforced Rubber Belt due to drive and timing issues
- Equipped with BSM3125-4 chains in wear resistant plain acetal with plastic pins
- Running in MCC3000 profiles
- Start-up August 2010



Application Report External



- **Carisma, Houston (TX)
United States**
 - BSM3125-K12 MTW single lane exterior wash:
 - 45,8 mtr single lane exterior wash concept with 305 mm wide MTW chain with moulded T2 (50,8mm) YSM automotive pushers with plastic pins
 - 4,6 mtr loader conveyor
 - Capacity to wash 150 cars per hour
 - Application start up March 2007
 - Washes over 200,000 cars per year!
 - Second similar in place since April 2008



- **Touchless, Washington (DC), United States**
 - BSM3125-K12 MTW single lane exterior wash:
 - 45 mtr single lane exterior wash concept with 12" wide MTW chain with moulded T2 YSM automotive pushers, equipped with plastic pins
 - 4,6 mtr loader conveyor
 - Capacity to wash 150 cars per hour
 - Application start up October 2007



Bob Carwash, Schiedam, Netherlands

- BSM3125-K12 MTW single lane polishing conveyor:
 - 16 mtr single lane polish conveyor with 305 mm wide MTW chain with moulded T2 (50,8mm) YSM automotive pushers, equipped with plastic pins
 - Capacity to polish 40 cars per hour
 - Dry running application
 - Application start up March 2008



- **Mr. Wash, Bochum
Germany**
 - BSM3125-K16 single lane exterior wash:
 - 36.5 mtr single lane exterior wash concept with 16" wide chain
 - Moulded T1 BSM automotive pushers
 - SG40 automotive side guards
 - Equipped with plastic pins
 - Retrofit of traditional over-under chain conveyor.
 - Application start up September 2010



ICO / Mazda, Zeebrugge, Belgium

- BSM3125-K16 T2.
 - 40 mtr long dry running 16-inch (406 mm) wide inspection conveyor after industrial carwash operation.
 - Located in the Bastenake Terminal of the Zeebrugge Harbour in Belgium.
 - Equipped with BSM3125-16 chains with T2 (2-inch / 50,8mm) pusher every 1600mm with plastic pins
 - Main terminal customer Madza (MLE, Mazda Logistics Europe)
 - Start-up Mai 2009



- **BLG Kielheim, Germany**

- CR3125-K16 single lane exterior cleaning application:
 - 50 mtr single lane cleaning conveyor in inland Car Logistic Centre
 - Washes “iron” dust (breaking dust and dust from overhead train wires) from cars after conveying with train carriers.
 - Using aggressive chemicals therefore special Chemical Resistant (CR) material required.
 - Chain equipped with stainless steel pins.
- Terminal mainly used by BMW, Audi, Suzuki, Kia, Chrysler and Hyundai
- Application start up August 2009



- **BLG Kielheim, Germany**

- BSM3125-K16 Inspection line:
 - 61 mtr single lane cleaning & inspection conveyor in inland Car Logistic Centre
 - One conveyor drive set up: first part wet, second inspection part (approx. 40m) running dry
 - Chain equipped with stainless steel pins.
- Terminal mainly used by BMW, Audi, Suzuki, Kia, Chrysler and Hyundai
- Application start up October 2009



- **Meyer Werft, Germany**

- BSM3125-K192

- Assembly line:

- 94 mtr two lane assembly line for ship cabins
 - Each lane is 4,9 mtr wide
 - Chain equipped with plastic pins.
 - Travelling extremely slow at 0,2 m/min
 - Total weight on the chain up to 70 tons, maximum weight on a single chain 45 Tons.

- Application start up June 2010

